



2019 FALL NEWSLETTER

City of Missoula - Public Works

Greetings from the Public Works Director!

We've had a busy summer in the Public Works Department. Our FY20 budget, approved in August, focuses on two main goals: addressing deferred maintenance and improving our quality of service.

In the Street Division, we are adding six new, full-time maintenance employees and the materials needed to fully utilize our existing equipment. We are also purchasing a small fleet of light-duty plows to improve our snow response in residential areas. In the Utility Division, we are continuing to build our capacity and maintain our assets through combined billing, growing our storm water utility, investing significantly in system replacement of water and sewer lines, and addressing long-term maintenance and expansion at the treatment plant.

Our mission is to build and maintain infrastructure that is safe, functional and serves our citizens. We are working to create efficiencies in Public Works by leveraging resources and talent across divisions, planning effective projects, and sharing costs with other City departments. We welcome your comments. If you have concerns or suggestions, please reach out to me at keenej@ci.missoula.mt.us.

Best Regards, Jeremy Keene

Combined Utility Billing

The staff at City of Missoula – Utilities is working hard to combine water, wastewater and storm water charges into one monthly bill. This will reduce bill printing costs and improve efficiency. Updates will be coming to you through the fall and early winter. Please bear with us as we make the bill-paying experience quick and simple for all of our customers. If you have any questions, please contact utility billing at (406) 552-6700.

Missoula Water Updates

Water Meter Replacement Project

Missoula Water is starting a project to replace all water meters in the municipal water system. This project will be fully funded by current water rates and completed in a five- to seven-year period. We will need access to all water meters located inside homes or commercial buildings and in outside meter pits. We appreciate your patience and help in completing this project.

The new water meters will help our community better manage water resources with the installation of Advanced Metering Infrastructure (AMI). AMI is a communication device that is incorporated in your new water meter to transmit water meter readings every 15 minutes, giving you access to detailed information about your water use.

The customer portal is anticipated to be available to our customers in the spring of 2020. If you have any questions or need more information, please contact us at dispatchw@ci.missoula.mt.us or (406) 552-6752.

Is your irrigation system ready for winter?

If you have an irrigation system, be sure to contact a landscape or irrigation company to have your irrigation system lines blown out before the winter season. Systems that are not blown out properly could freeze, crack, or burst and lead to serious damage.

We would like to offer a friendly reminder for our customers who have separate irrigation meters: Please call Missoula Water at (406) 552-6700 when your irrigation system has been turned off for the season. We will then deactivate your irrigation account.

Water Line Loan Program

Missoula Water is offering low-interest loans to water customers who need to repair or replace their service lines or internal plumbing, install a meter and meter pit or connect to the municipal water system. Email wllp@ci.missoula.mt.us for more information.

Street Division Updates

Leaf Collection

Every fall beginning in late October, City of Missoula crews pick up residents' leaves throughout the 34 square miles of the city.

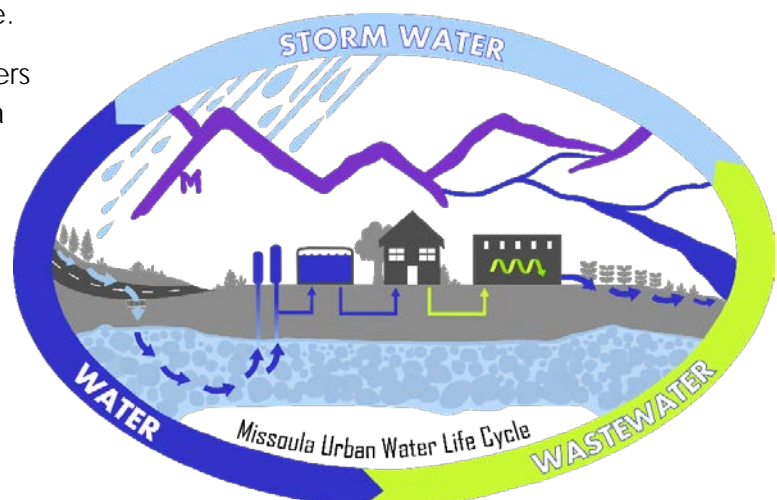


Crews work their way through four areas and three special districts through November. If weather permits, they return to areas where more leaves have fallen or where early snow interrupted the schedule. In all, they collect about 1,000 dump truck loads.

Leaf collection has many benefits:

- Keeps streets clean
- Keeps leaves out of the landfill
- Recycles leaves as compost through the City's Garden City Compost operation
- Saves labor for residents – no bagging, no hauling
- Keeps leaves out of storm drains, where they clog drains and pollute waterways with nutrients.

For more information, please visit ci.missoula.mt.us/504/Leaf-Collection and watch the *Missoulian* the third week of October for the leaf pickup schedule.



Traffic Services Updates

Line Painting Projects

Traffic Services spent many hours this summer preparing for school to resume. We refreshed the paint on approximately 140 school crosswalks and brightened up the curb paint that surrounds school



We had a large chip seal season that required many hours of layout and striping. The chip seal project

covered five streets, giving us the opportunity to add bike lanes, adding to the City's bicycle plan. We need your help. Please refrain from driving over the lines that recently received fresh paint, as these lines need time to dry. Please contact Traffic Services at (406) 552-6372 if you have any questions or concerns.

Garden City Compost Updates



Do you know what's in your compost?

Our Class A Compost, Enriched Topsoil & Top-dress are regularly tested, and their quality is assured. Our products encourage a healthier and more productive garden, lawn and landscape. Soil quality is improved with beneficial organic material providing increased water retention.

Autumn is in the air

Garden City Compost is your leaf drop-off headquarters! Prepare your yard for winter while keeping valuable resources out of the landfill. Don't forget to recycle your Christmas trees with us! *Please no garbage or pet waste.

Natural, Sustainable, Local

Included in our resource recovery efforts, we are now accepting tree rounds up to 30 inches in diameter, along with lumber and pallets. In addition, we have added meat to our accepted wasted foods. **Lawn Topdress** screened to 3/16" for a healthier existing turf. **Class A Compost** screened to 3/8" to enhance existing soils for any form of growing. **Enriched Topsoil** screened to 3/8" and enriched with 25% compost. Additional information: <http://www.ci.missoula.mt.us/2089/Garden-City-Compost>

Storm Water Updates

Storm Water Drains

Keeping your neighborhood storm drains clear of leaf and yard debris is especially important right before the first snow fall. By clearing off storm drains we not only reduce water pollution, but we also reduce the chance of drains clogging, ice building up, and water ponding on our streets during the

spring thaw. This simple step will help to keep our city safe and dry this spring. If you have a storm drain that has not been functioning correctly, please contact the Storm Water Utility at (406) 552-6358.

Have a safe and wonderful holiday season!

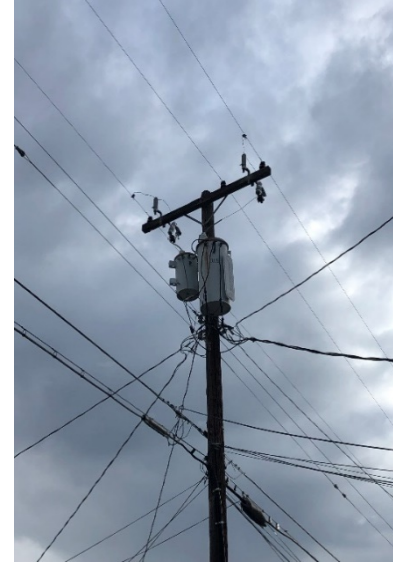


Wastewater Updates

Power Outages & STEP Systems

If you have a City-owned STEP System, be sure to follow these guidelines in the event of a power outage:

During long-term power outages of several hours or more, you should minimize water usage. Even though the STEP system's discharge pump and alarm will not operate without power, wastewater from your home can continue to fill the tank if your water service has not been interrupted. Use only what is absolutely necessary. Check basement or lower drains often.



If the drains begin to fill with water, discontinue all water usage. Call the Wastewater Division immediately at (406) 552-6600, available 24/7, including weekends and holidays.

Short-term power outages of a few minutes to a few hours should not be of concern. The reserve tank capacity can handle short-term events like these.

Like Missoula Water on Facebook at www.facebook.com/missoulawater/

Contact Us

Compost	406.552.6619	composting@ci.missoula.mt.us
Missoula Water	406.552.6700	watercs@ci.missoula.mt.us
Storm Water	406.552.6358	stormwater@ci.missoula.mt.us
Streets	406.552.6360	strayera@ci.missoula.mt.us
Wastewater	406.552.6600	dennisa@ci.missoula.mt.us

City of Missoula Public Works – Working Together to Serve You.

www.ci.missoula.mt.us/publicworks