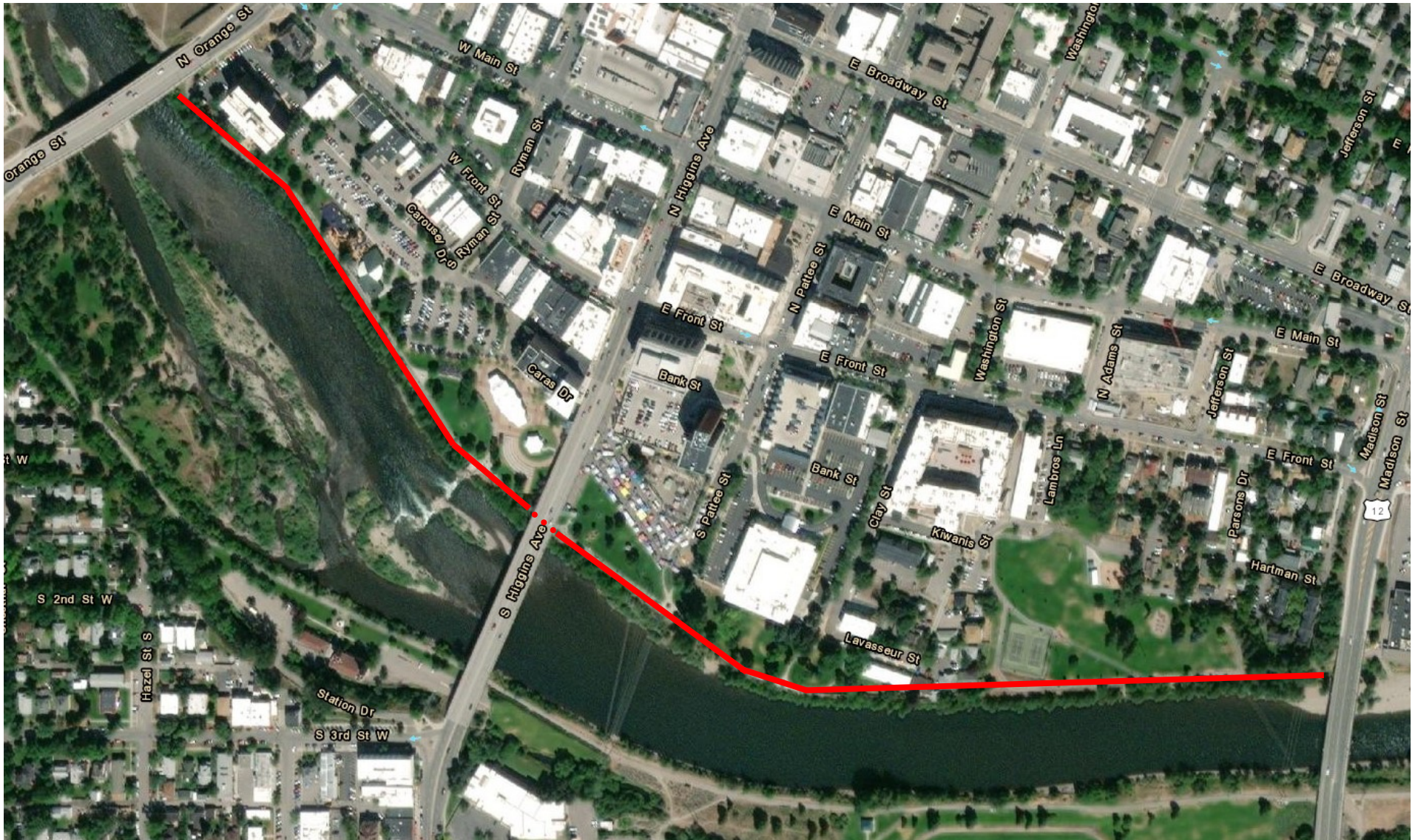


Levee III Project Area



Project dates: March 1 to April 15, depending on weather

Work starts at Madison St. Bridge and moves to the west with only sections of trail closed adjacent to work. All other trail sections are open. Trail users are asked to find an alternate route. Workers will begin work on Levee V once work on Levee III is completed.

Levee V Project Area



Project dates: March 1 to April 15, depending on weather

Work starts at Madison St. Bridge and moves to the west with only sections of trail closed adjacent to work. All other trail sections are open. Trail users are asked to find an alternate route. Workers will begin work on Levee V once work on Levee III is completed.