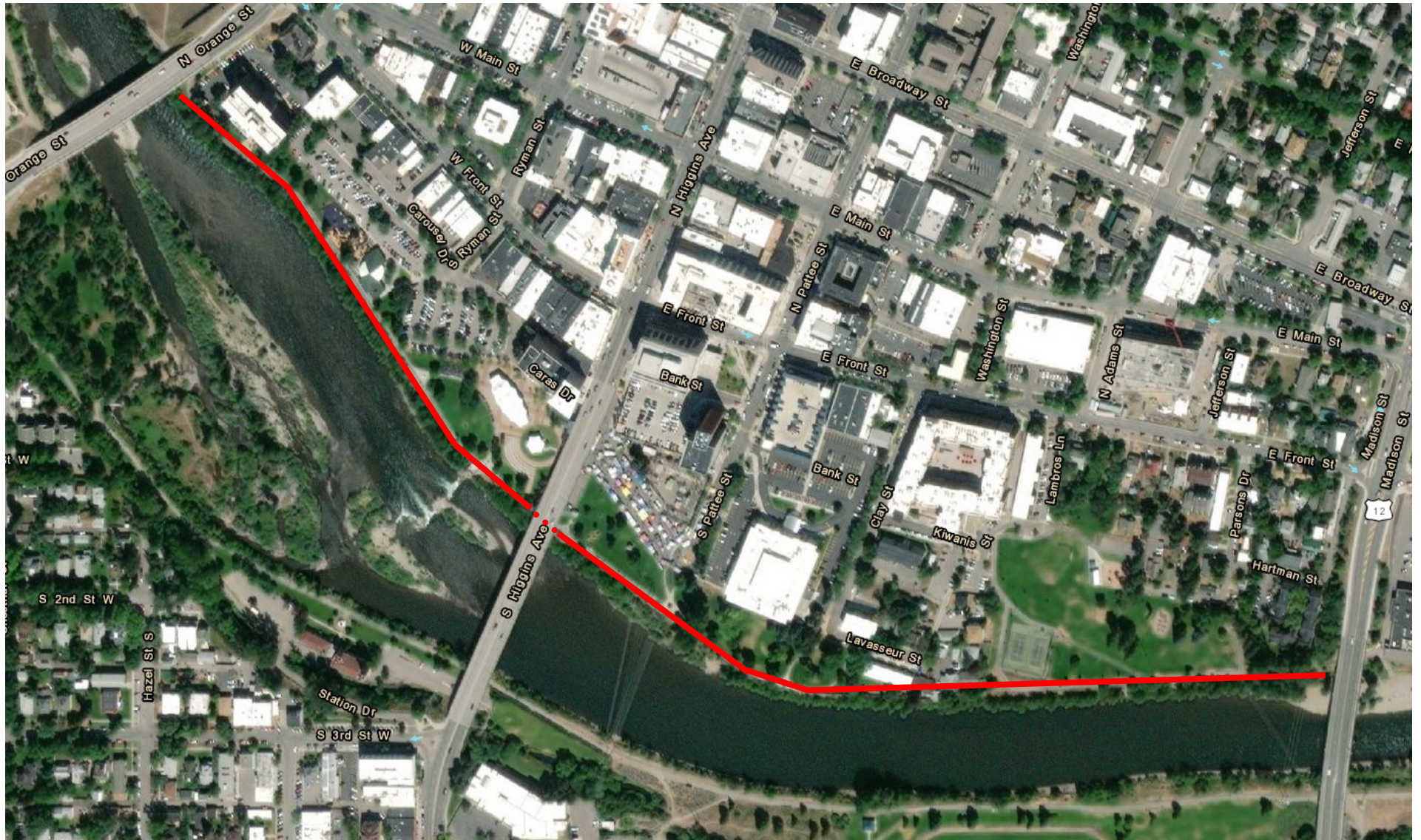


# Levee III Project Area



**Project dates:** Tuesday, April 5 to Friday, April 8, depending on weather

Work starts at Madison St. Bridge and moves west with only sections of trail closed adjacent to work. All other trail sections are open. Trail users are asked to use parks, streets, and sidewalks as needed to travel around the trail closures. Workers will continue to move west along the trail as the work is completed.